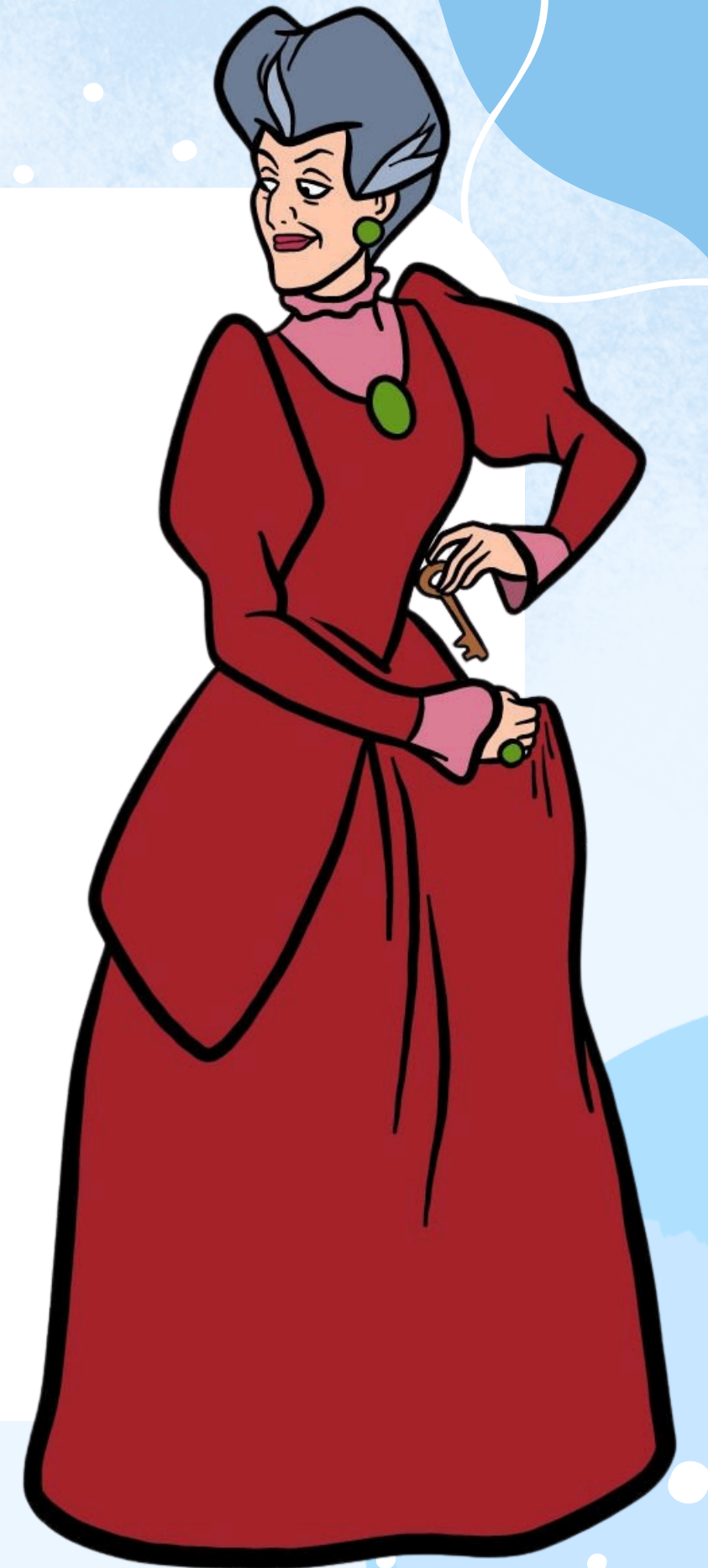




CINDERELLA TRIVIA

**WHAT IS
CINDERELLA'S
STEPMOTHER'S
NAME?**





LADY TERMAINE

WHO ARE CINDERELLA'S EVIL STEP SISTERS?



ANASTASIA & DRIZELLA





WHAT IS THE
NAME OF
CINDERELLA'S
DOG?



BRUNO

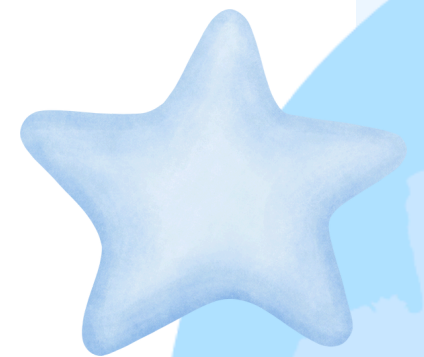


**WHAT ARE THE
NAMES OF
CINDERELLA'S
PET MICE?**

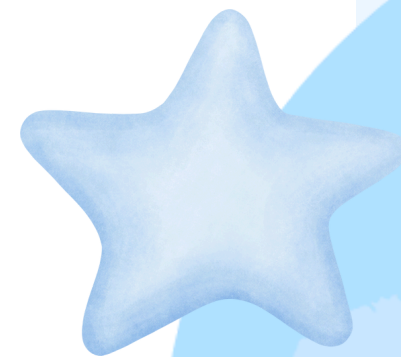


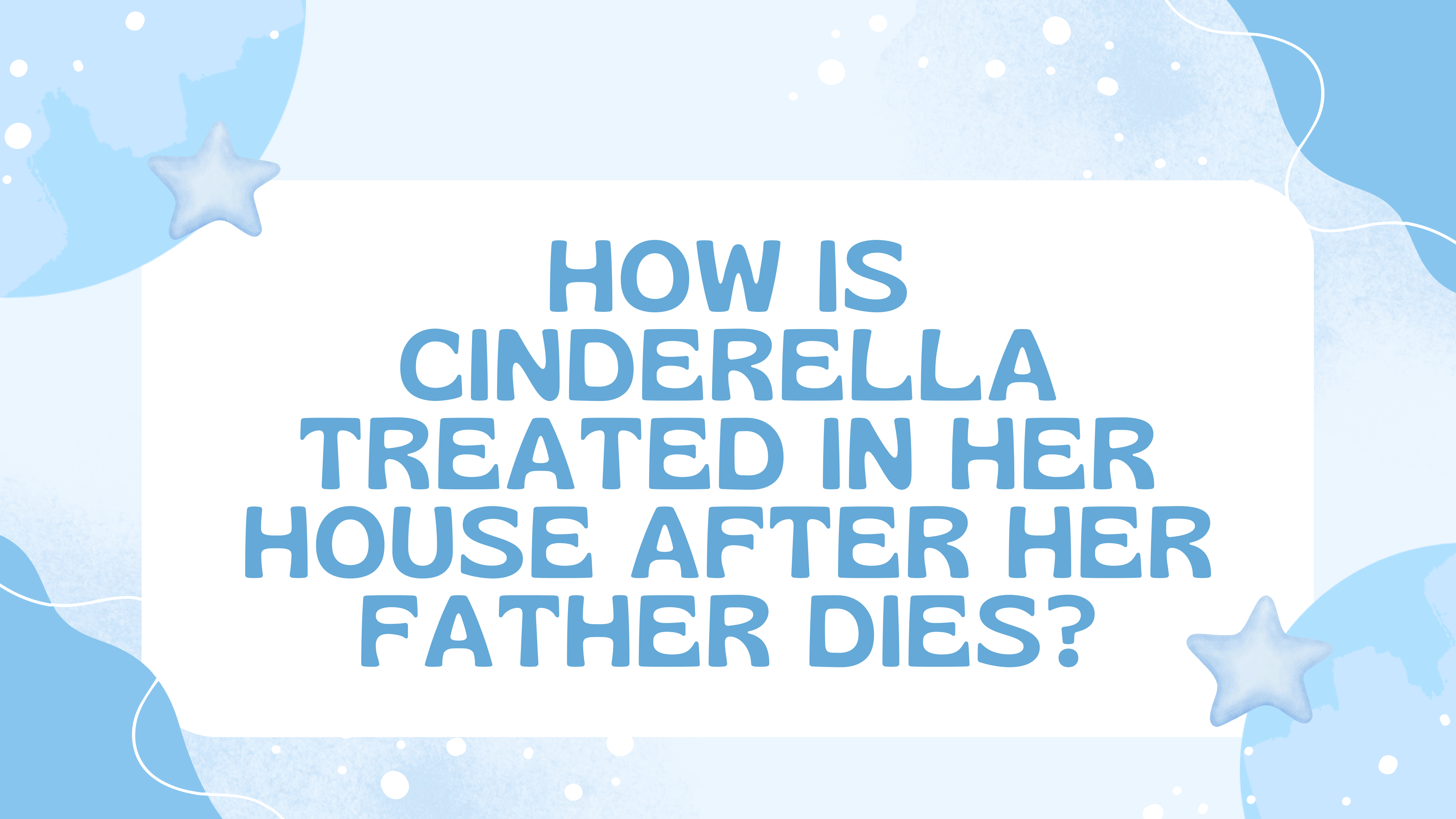
JAQ
&
GUS

**WHAT IS THE NAME
OF THE WICKED
STEPMOTHER'S
CAT?**



LUCIFER





**HOW IS
CINDERELLA
TREATED IN HER
HOUSE AFTER HER
FATHER DIES?**

LIKE A SERVANT



**WHERE IS
CINDERELLA
MADE TO
SLEEP?**






IN THE ATTIC




WHY DOES
THE PRINCE
THROW A
BALL?

**TO FIND
A WIFE**





**WHAT COLOR IS
CINDERELLA'S DRESS
THAT HAD BELONGED
TO HER MOTHER?**

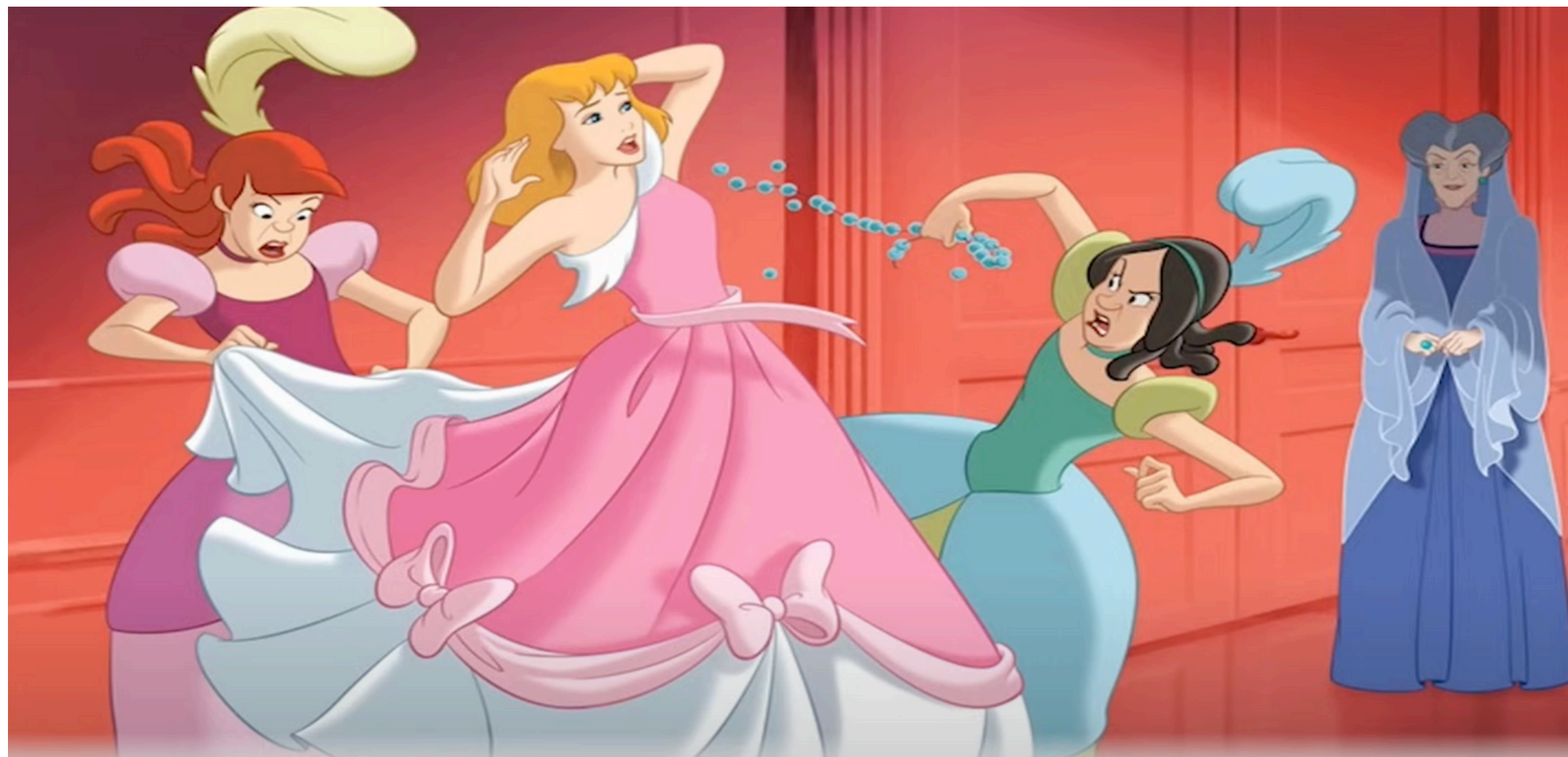




PINK



**WHY CAN'T
CINDERELLA GO TO
THE BALL?**



HER SISTERS RUINED HER DRESS

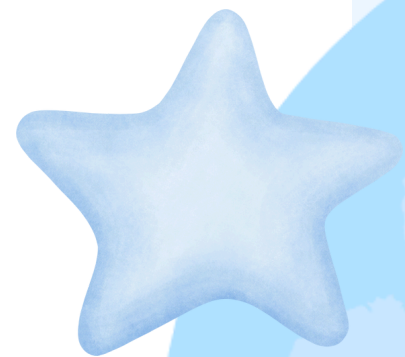


**WHAT IS THE
FAIRY
GODMOTHER'S
CATCHPHRASE?**





**BIBBIDI
BOBBIDI
BOO**

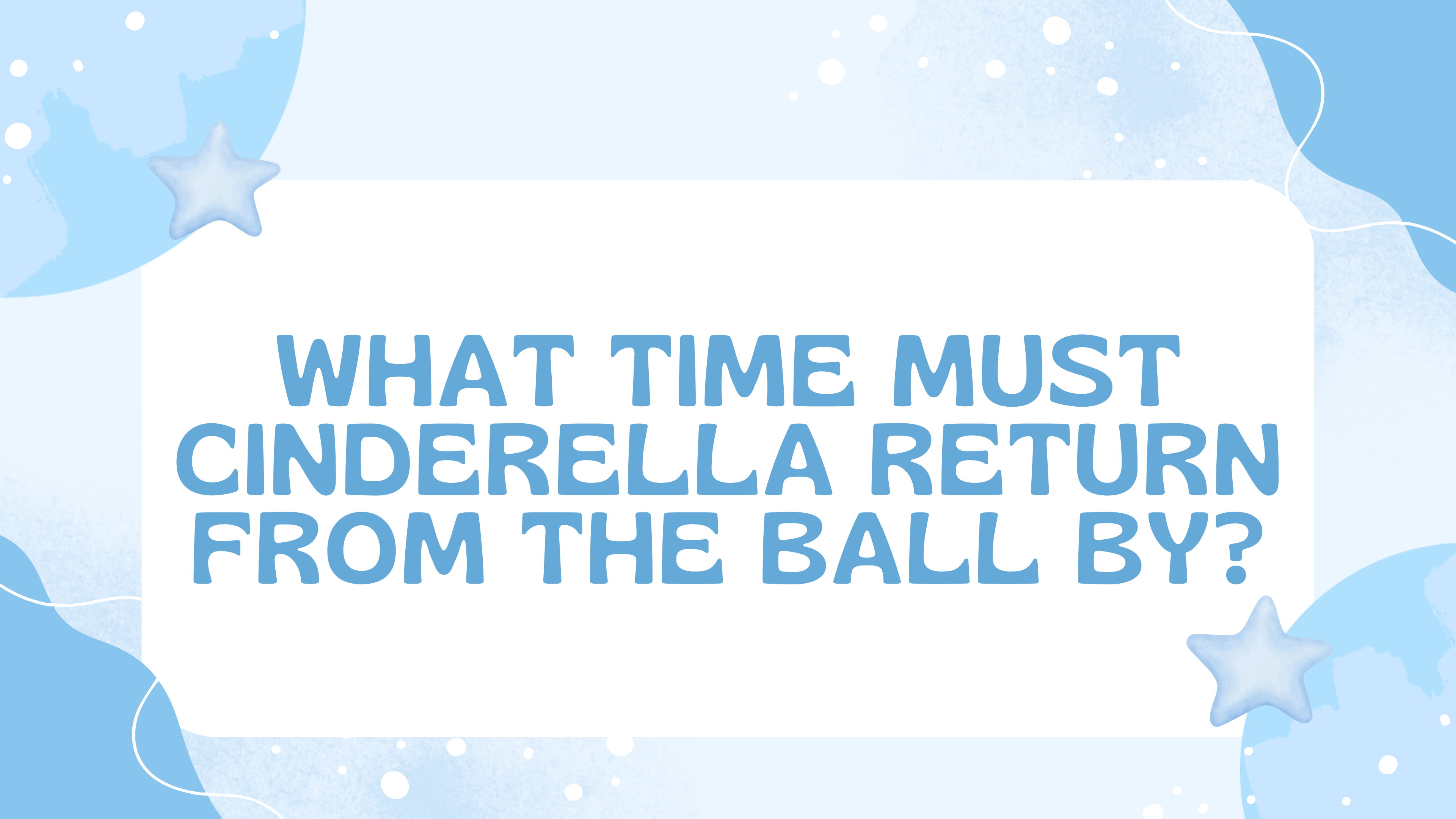


WHAT VEGETABLE BECOMES CINDERELLA'S CARRIAGE?



A PUMPKIN






**WHAT TIME MUST
CINDERELLA RETURN
FROM THE BALL BY?**



MIDNIGHT



**WHAT HAPPENS AT
MIDNIGHT WHEN
CINDERELLA LEAVES
THE BALL?**



THE MAGIC WEARS OFF





**WHAT DOES
CINDERELLA LOSE AT
THE BALL?**

A GLASS SLIPPER



WHY DOES
LADY
TREMAINE
(STEPMOTHER)
LOCK
CINDERELLA
IN THE ATTAC?



SO SHE
CANNOT
TRY ON
THE GLASS
SLIPPER



**WHO STEALS THE
KEY FROM LADY
TREMAINE?**



THE MICE





**THE STEPMOTHER TRIPS THE
FOOTMAN AND THE GLASS
SLIPPER BREAKS SO
CINDERELLA CANNOT TRY IT ON.**



**HOW DO THEY
KNOW THE GLASS
SLIPPER FITS
CINDERELLA?**

**SHE HAS
THE OTHER
SLIPPER.**

